

166 Haven Road, Haverfordwest



**Offers In Excess Of £375,000**



R K Lucas & Son are delighted to offer to the market this detached bungalow set in the ever popular residential location of Haven Road, Haverfordwest. The property briefly comprises 3 double bedrooms, open-plan living/dining room, kitchen, shower room, utility area, and separate WC, and benefits from an integral garage, off-road parking and a large garden.

The property sits on the outskirts of the town, providing easy access to the beaches at Broad Haven and Little Haven. Haverfordwest Racecourse is within walking distance, whilst the nearby area of Portfield has a range of amenities, including a Tesco superstore.

The property and its gardens really do deserve a personal inspection in order that the attributes of the site may be fully appreciated. With thoughtful modernisation this family home could be transformed into a luxury dwelling.



**RK & son  
Lucas**  
PEMBROKESHIRE'S PROPERTY  
PROFESSIONALS

Covering the whole of Pembrokeshire from  
offices in Haverfordwest and Milford Haven.

[www.rklucas.co.uk](http://www.rklucas.co.uk)

01437 762538 01646 695713







#### **Porch**

Timber framed double glazed units, tiled flooring

#### **Hallway**

Glass panelled internal door, parquet flooring, loft access

#### **Lounge/Dining Room 27'6" x 17'0" (max) (8.40m x 5.2m (max))**

Spanning the depth of the property with central fire place, triple aspect timber framed double glazed windows, parquet flooring, fitted shelving units

#### **Kitchen 15'1" x 13'1" (4.60m x 4.00m)**

Matching base and walls units with contrasting work surface, double drainer sink, integrated electric oven, gas hob and extractor fan, central heating boiler, dual aspect timber framed double glazed windows, tiled flooring

#### **Bedroom 1 12'2" x 13'9" (3.70m x 4.20m)**

Front facing double bedroom with electric fire, parquet flooring, timber framed double glazed bay window

#### **Bedroom 2 11'10" x 14'1" (3.60m x 4.30m)**

Front facing double bedroom with parquet flooring, timber framed double glazed bay window

#### **Bedroom 3 10'4" x 12'2" (3.15m x 3.70m)**

Rear facing double bedroom with parquet flooring, uPVC double glazed window, built-in wardrobe

#### **Shower Room**

Walk-in shower cubicle with Mira electric shower, vanity hand basin, close coupled lavatory, part tiled walls, fitted carpet, frosted timber framed double glazed window to rear

#### **Utility Area 19'8" x 2'11" (6.00m x 0.90m)**

With plumbing and electric for washing machine and dryer, window to rear, tiled flooring

#### **WC**

Low flush lavatory, vinyl flooring, window to side

#### **Garage**

Integral garage with up and over door, electric and lighting, window to rear

#### **Outside**

The property is set on a large plot (in excess of 0.4 acres) with a lawned garden and gated driveway to front, and an extensive garden to the rear, predominately of lawn with an array of mature trees and shrubbery

#### **General Notes**

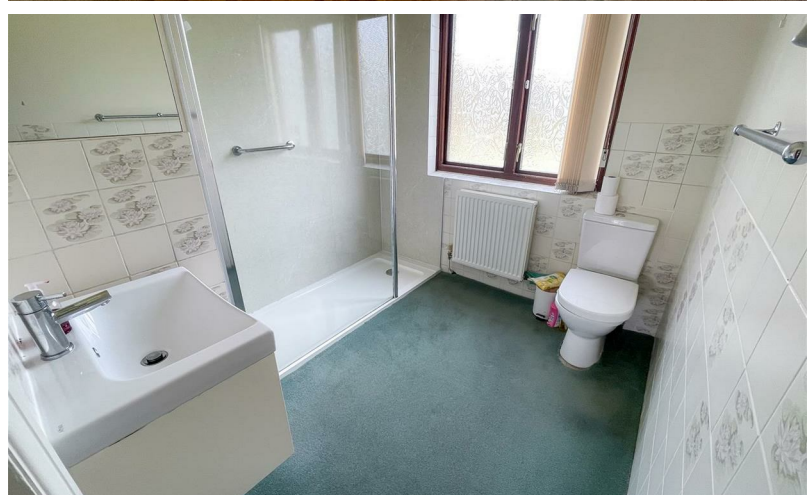
Services: All mains services connected  
Tenure: Freehold  
Local Authority: Pembrokeshire County Council  
Tax Band: F

#### **Viewing**

By appointment with R K Lucas & Son



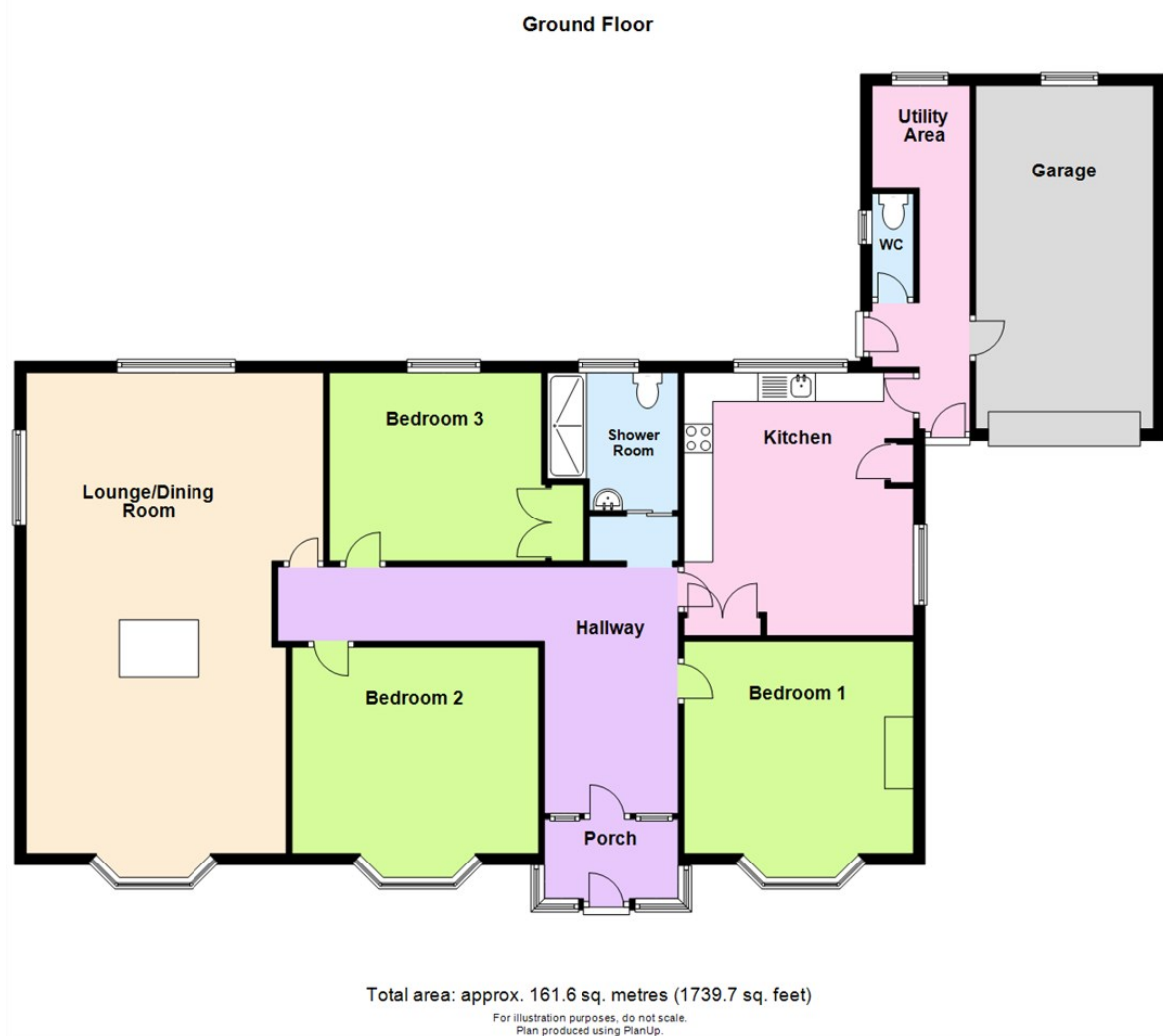




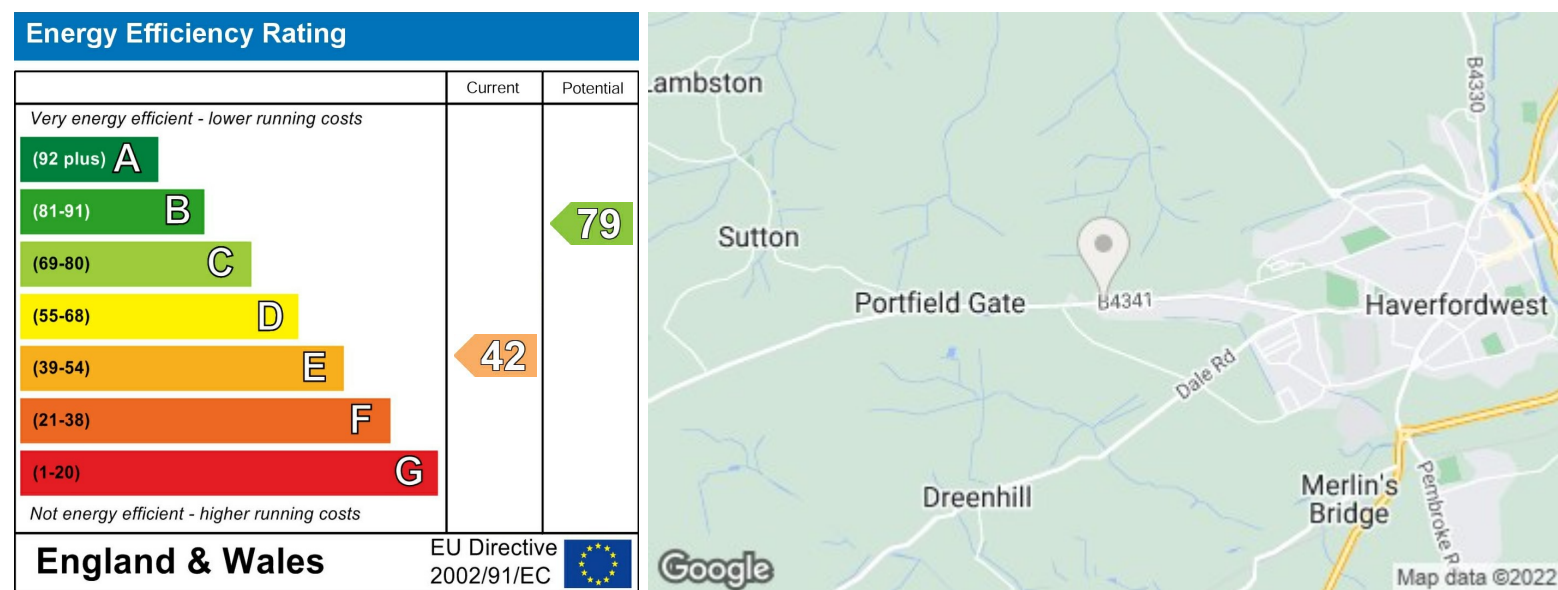
See even more photos on our website  
[www.rklucas.co.uk](http://www.rklucas.co.uk)







From our Haverfordwest office take High Street and Dew Street, then use the middle lane to turn right onto Albert Street. Continue on this road over the mini roundabout and into Portfield and then onto the Haven Road. Pass the entrance to Ruther Park on your left then No. 166 is just a little further along on the right hand side.



These particulars are supplied subject to the property being unsold/let/unlet and on the express conditions that negotiations for purchase or otherwise are made through and deposit paid to R K Lucas & Son. The description is believed to be accurate, but it is issued as a guide only, thereafter the agents do not hold themselves responsible for any errors in description as the property will be sold/let according to the contract issued by the Vendor's/Lessor's Solicitors.